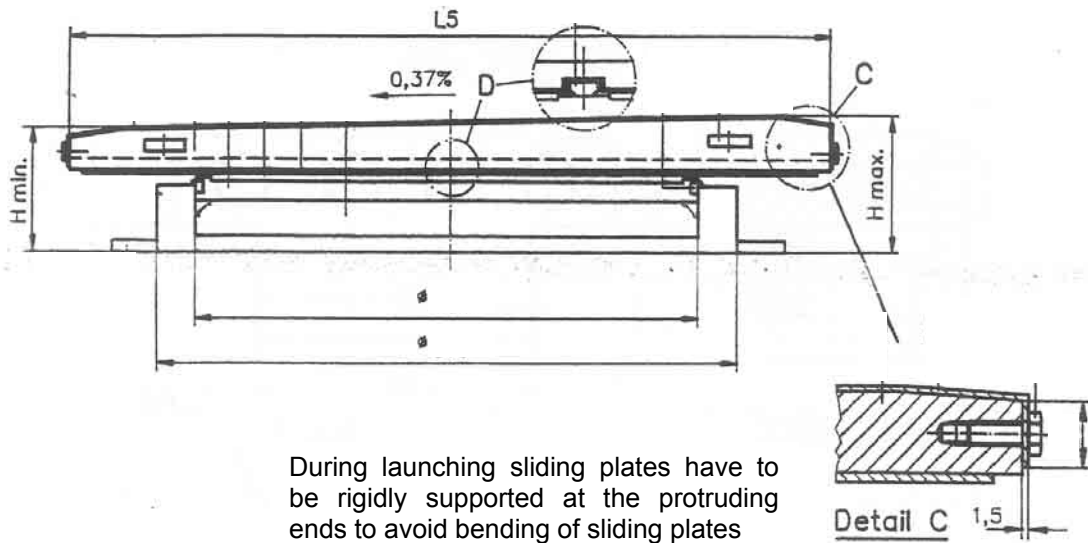


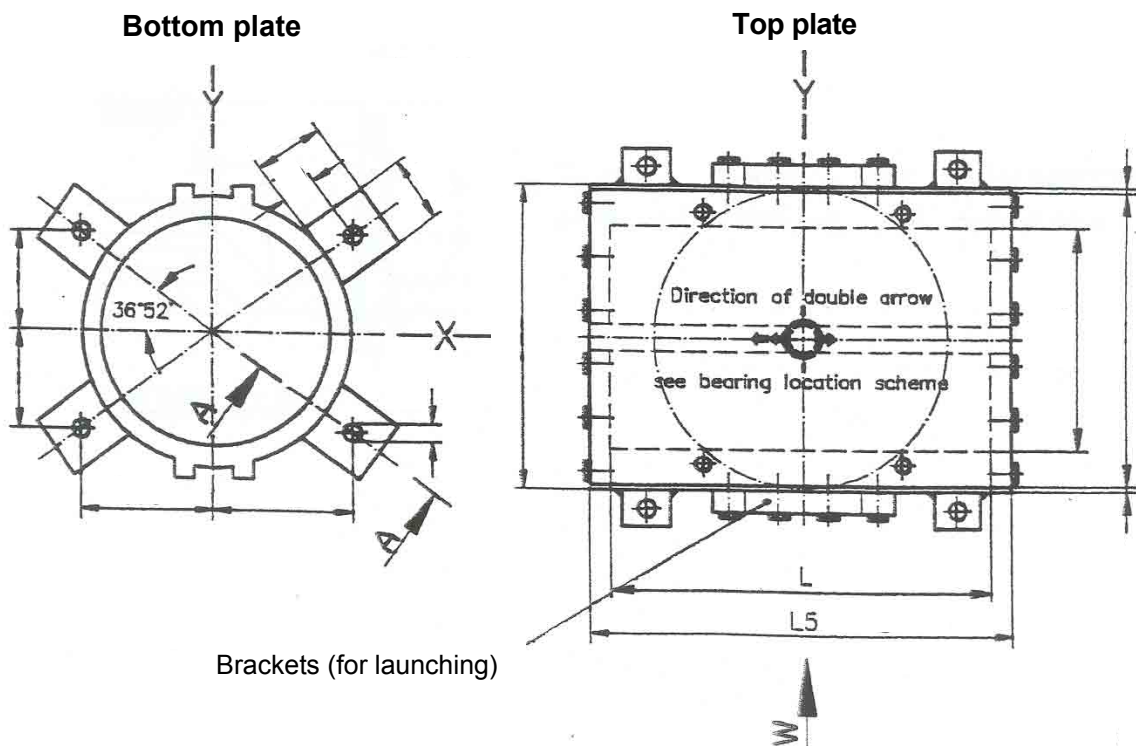
mageba Incremental Launching Bearing ILM

1) General description

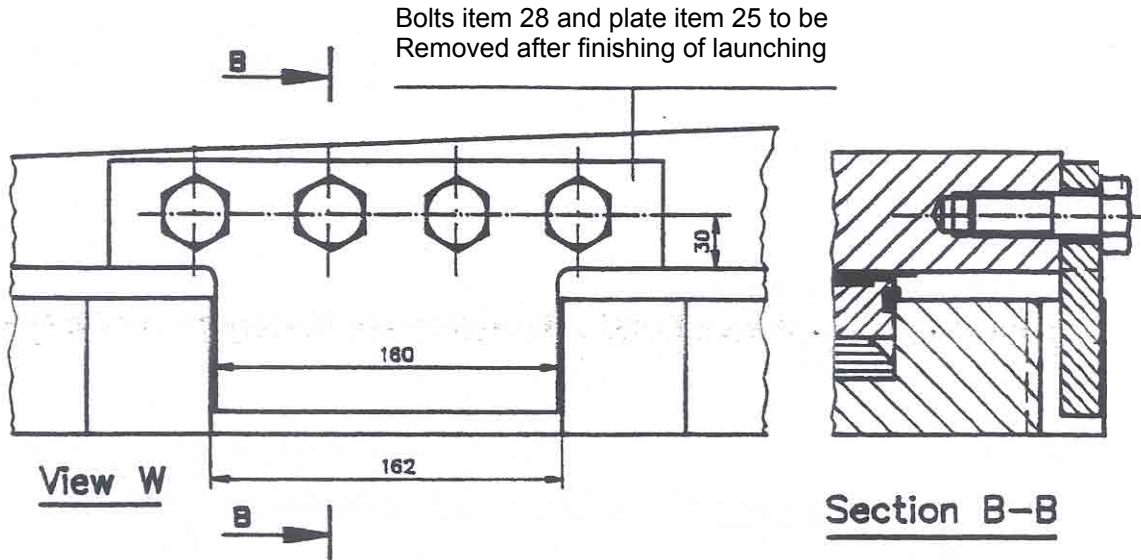
a) Typical cross section



b) Typical top view

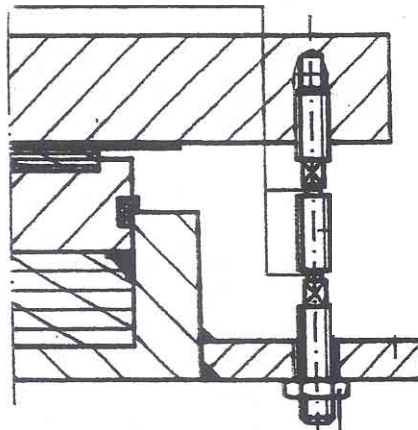


c) Brackets, to hold the top plate during launching

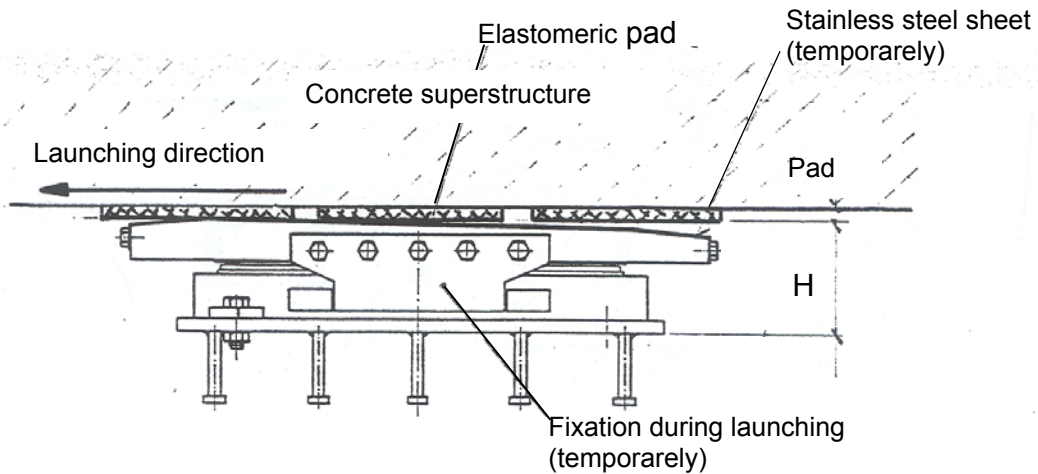


d) Fixing bolts for transportation and presetting of top plate

To be cut before operation of bearing

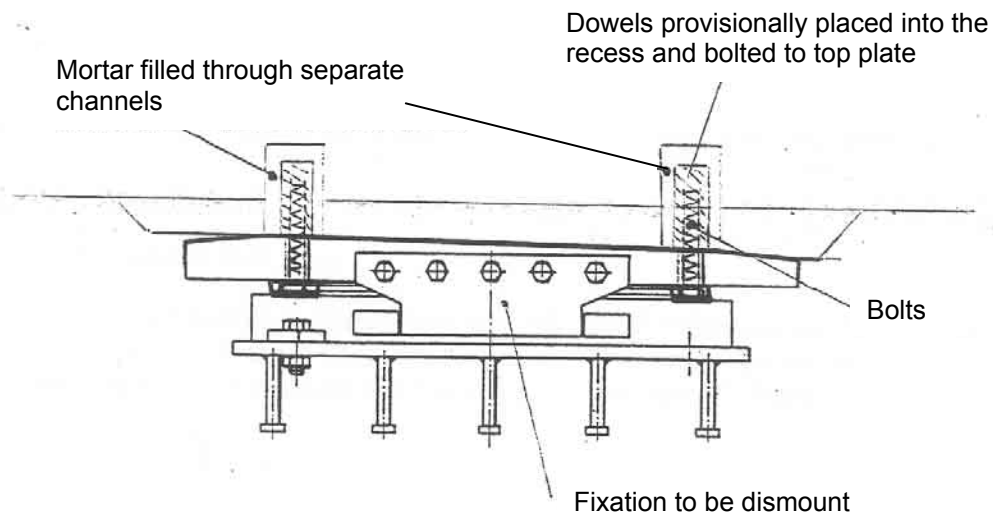


2) ILM bearing during launching procedure



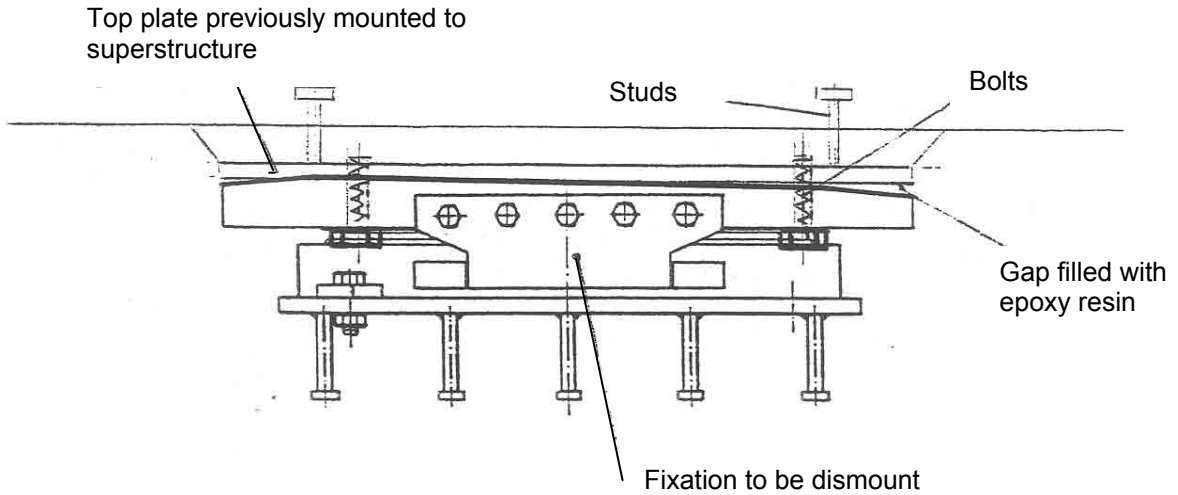
3) Proposals for fixation after launching procedure

Proposal 1: Connection with dowels



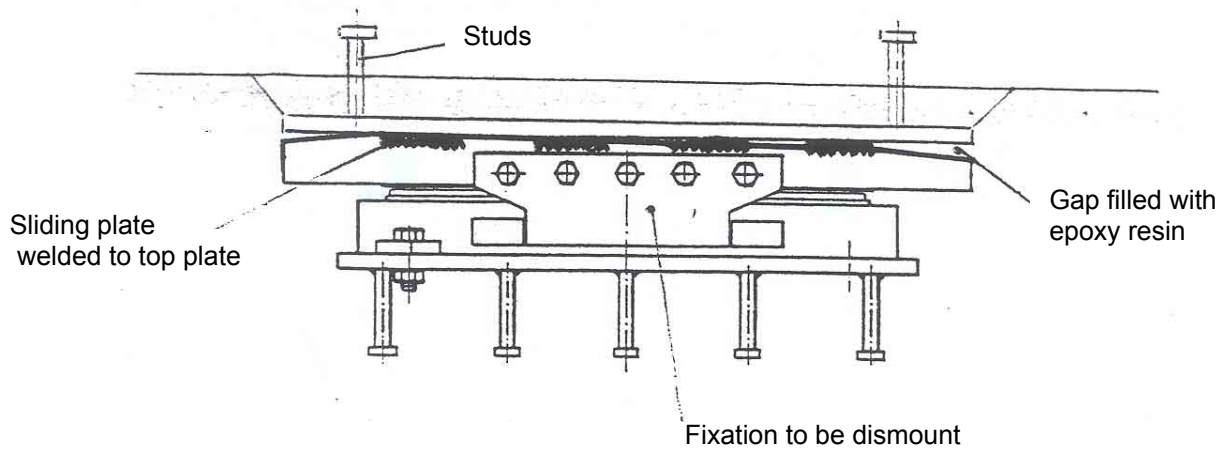
Proposal 2: Connection to top plate previously mounted with bolts

Top plate premounted in such a way that it is exactly above the bearing at final position

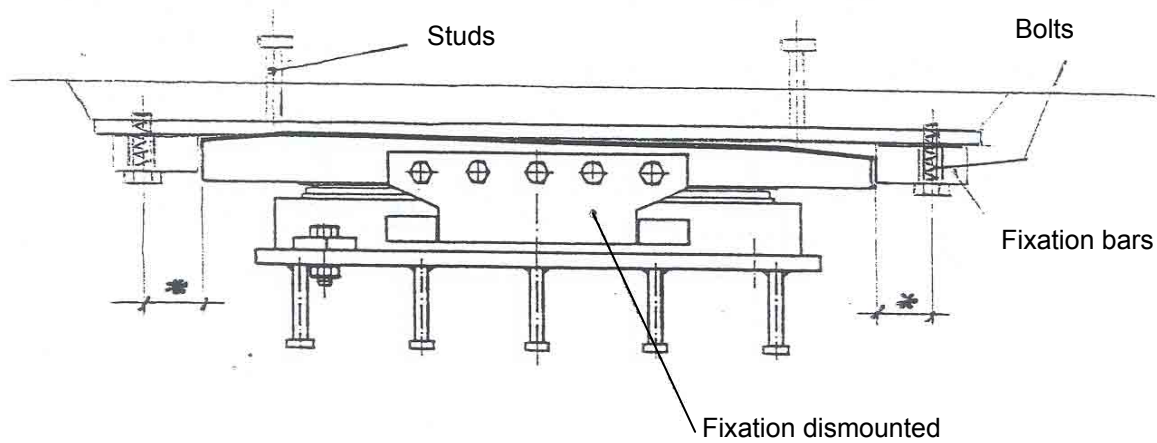


Proposal 3: Connection to previously mounted top plate by welding

Top plate premounted in such a way that it is above the bearing at final position



Proposal 4: Connection to previously mounted top plate by using transversal fixation bars



* Distance measured after launching and fixation bars manufactured accordingly